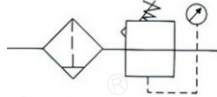


TAC 系列空气过滤组合 (二联件)



符号



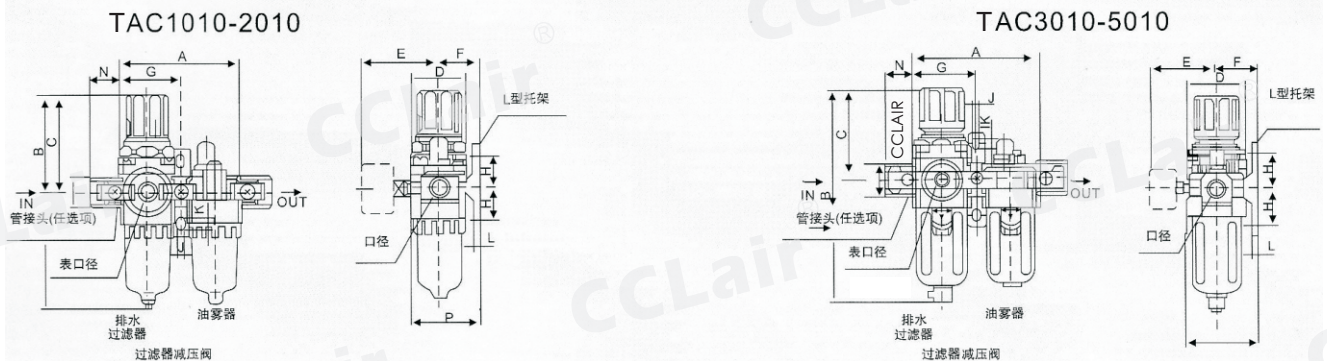
订购码

| | | | | |
|------|--------------------------------------|---|--|-----------------------------|
| TAC | 2010 | - | 02 | D |
| 系列代号 | 壳体代号 | | 螺纹代号 | 排水方式 |
| | 1010 2010 3010 4010 5010 | | M5:M5 02:1/4" 03:3/8" 04:1/2" 06:3/4" 10:1" | 空白:手动排水 A:差压排水 D:自动排水 |

技术参数

| | | | | | | | | |
|----------|--|-------------|-------------|-------------|--|-------------|-------------|-------------|
| 手动排水型 | TAC1010-M5 | TAC2010-02 | TAC3010-02 | TAC3010-03 | TAC4010-04 | TAC4010-06 | TAC5010-06 | TAC5010-10 |
| 自动排水型 | TAC1010-M5D | TAC2010-02D | TAC3010-02D | TAC3010-03D | TAC4010-04D | TAC4010-06D | TAC5010-06D | TAC5010-10D |
| 接管口径 | M5×0.8 | 1/4 | 1/4 | 3/8 | 1/2 | 3/4 | 3/4 | 1 |
| 压力表口径 | 1/16 | 1/8 | 1/8 | 1/8 | 1/4 | 1/4 | 1/4 | 1/4 |
| 额定流量 | 90 | 500 | 2000 | 2000 | 4000 | 4500 | 5000 | 5000 |
| 环境及流体温度 | 5~60℃ | | | | | | | |
| 保证耐压力 | 1.5Mpa (15.3kgf/cm ²) | | | | | | | |
| 最高使用压力 | 1.0Mpa (10.2kgf/cm ²) | | | | | | | |
| 过滤孔径 | 5 μm | | | | | | | |
| 建议用油 | 透平1号油 | | | | | | | |
| 杯材料 | 聚碳酸酯 | | | | | | | |
| 杯防护罩 | TAC1000~2000 (无) TAC3000~5000 (有) | | | | | | | |
| 调压范围 | TAC1000:0.05~0.7Mpa (0.51~7.1kgf/cm ²) | | | | TAC2000~5000:0.05~0.85Mpa (0.51~8.7kgf/cm ²) | | | |
| 阀型 | 带溢流型 | | | | | | | |
| 组件 过滤减压阀 | TAW1000 | TAW2000 | TAW3000 | TAW3000 | TAW4000 | TAW4000 | TAW5000 | TAW5000 |
| 组件 油雾器 | TAL1000 | TAL2000 | TAL3000 | TAL3000 | TAL4000 | TAL4000 | TAL5000 | TAL5000 |
| 重量 | 0.22 | 0.66 | 0.98 | 0.98 | 1.93 | 1.99 | 3.2 | 3.2 |

外形尺寸



| 型号 | 口径 | A | B | C | D | E | F | G | H | J | K | L | M | N | P | B |
|------------|------------|-----|-------|------|----|------|------|------|----|-----|-----|----|----|----|------|-------|
| TAC1010 | M5×0.8 | 58 | 109.5 | 50.5 | 25 | 26 | 25 | 29 | 20 | 4.5 | 7.5 | 5 | 18 | 16 | 38.5 | 130 |
| TAC2010 | 1/4" | 90 | 164.5 | 78 | 40 | 56.8 | 30 | 45 | 24 | 5.5 | 8.5 | 5 | 22 | 23 | 50 | 187.5 |
| TAC3010 | 1/4", 3/8" | 117 | 211 | 92.5 | 53 | 60.8 | 41 | 58.5 | 85 | 7 | 11 | 7 | 34 | 26 | 70.5 | 248.5 |
| TAC4010 | 3/8", 1/2" | 154 | 262.5 | 112 | 70 | 70.5 | 50 | 77 | 40 | 9 | 13 | 7 | 42 | 33 | 88 | 300 |
| TAC4010-06 | 3/4" | 164 | 267 | 114 | 70 | 70.5 | 50 | 82 | 40 | 9 | 13 | 7 | 46 | 36 | 88 | 304 |
| TAC5010 | 3/4", 1 | 195 | 338 | 116 | 90 | 75.5 | 69.8 | 97.5 | 50 | 12 | 16 | 11 | 55 | 40 | 115 | — |